

# ***Network Scanner Tool***

## ***V3.3***

*User's Guide  
Version 3.3.09*

**SHARP®**

---

## Copyright

© 2000-2012 by SHARP CORPORATION. All rights reserved. Reproduction, adaptation or translation without prior written permission is prohibited, except as allowed under copyright laws.

## Trademark Acknowledgements

SHARP® is a registered trademark of SHARP CORPORATION.

Microsoft® and Windows® are registered trademarks of Microsoft Corporation.

Internet Explorer® is a registered trademark of Microsoft Corporation.

All other trademarks identified herein are the property of their respective owners.

---

## Table of Contents

<b>Chapter 1 Overview.....</b>	<b>1</b>
Introduction .....	1
About This Guide .....	2
Organization .....	2
Term Definitions.....	2
Hardware and Software Requirements.....	3
Network Scanner Tool Setup .....	3
<b>Chapter 2 Preparing the Network.....</b>	<b>5</b>
Introduction .....	5
Step 1: Determine the Network Policy .....	6
Step 2: Set up the DHCP and DNS Servers .....	6
Step 3: Set up Scanner Network Parameters .....	6
Step 4: Notify the Network Users.....	7
Troubleshooting.....	7
Technical Information.....	8
<b>Chapter 3 Installing the Network Scanner Tool.....</b>	<b>9</b>
Introduction .....	9
Network Scanner Tool Installation .....	10
Network Scanner Tool Setup Wizard.....	12
<b>Chapter 4 Using the Network Scanner Tool.....</b>	<b>18</b>
Introduction .....	18
Network Scanner Tool Menu (system tray icon) .....	19
Open .....	19
Start/Stop/Exit.....	19
Automatic Profile Update.....	20
About.....	21
Configuring the Network Scanner Tool .....	22
Profiles Tab .....	22
Creating a New Profile.....	23
Profile Properties Options -- Name .....	24
Profile Properties Options – Image Processing.....	25
Profile Properties Options – Convert by OCR.....	26
Profile Properties Options – Optimized PDF for Fast Web View .....	27
Profile Properties Options – Output Options .....	27
Reviewing Profile Settings .....	30
Deleting a Profile .....	31

---

Profile Default .....	31
Scanners Tab .....	32
Adding a New Scanner .....	33
Examining/Changing Scanner Properties .....	34
Deleting a Scanner .....	35
Enable/Disable a Scanner .....	35
Auto Detect .....	35
Proxy Server Support.....	35
Web Setup.....	36
System Options Tab.....	37
FTP Port Number .....	37
Allow FTP file upload only .....	37
Allow anonymous FTP log-in (default) .....	38
Use custom FTP log-in .....	38

---

# ***Chapter 1*** ***Overview***

## **Introduction**

Welcome to Sharp's Network Scanner Tool! This flexible, easy to use software provides TCP/IP network scanning capability between Sharp network multifunction scanners with Network Scanner Expansion and your Windows-based computer. With this Network Scanner Tool, any scanned image received by your computer can automatically be:

- Routed to folders
- Passed to applications with command-line references
- Sent as email
- Passed to Sharpdesk for:
  - Text conversion
  - Image processing
  - Desktop document organization
  - Annotation and document sequencing.

---

## About This Guide

This guide assumes you have a basic understanding of Windows. This includes how to start your computer, navigate within a Windows environment, and perform basic Windows functions such as copying, printing and moving documents. You should also be familiar with basic Windows terms and be able to work within Microsoft's Internet Explorer.

For assistance in using Windows or Internet Explorer, refer to your Microsoft Windows user documentation.

## Organization

This user's guide is organized as follows:

### Chapter 1, Overview

Introduces the Network Scanner Tool. It contains information about guide organization, term definitions, computer requirements, the Network Scanner Tool setup and directory structure.

### Chapter 2, Preparing the Network

Intended for the Network Administrator. Explains the necessary steps that must be taken to configure the network before installing the Network Scanner Tool.

### Chapter 3, Installing the Network Scanner Tool

Explains how to install and set up the Network Scanner Tool.

### Chapter 4, Using the Network Scanner Tool

Explains how to access, configure, and use the Network Scanner Tool.

## Term Definitions

As you work with the Network Scanner Tool, keep in mind how the following terms are used:

TERM	DEFINITION
Network Scanner Tool	A software application used for TCP/IP scanning from your scanner to your networked computer.
FTP	A protocol commonly used for transferring files over the network.
Process Definition	A Network Scanner Tool term used to specify the destination workstation and the set of commands to be automatically performed on received images from a Sharp multifunction scanner with Network Scanner Expansion at your computer's desktop.
FTP Port	The TCP/IP port used by the FTP server to monitor connections. This port can be changed from the normal default to a custom value to avoid conflicts when more than one FTP server is running on the same computer.

## Hardware and Software Requirements

The following minimum hardware and software is required to use the Network Scanner Tool.

<b>Operating System: Attribute</b>	<b>Windows XP</b>	<b>Windows Vista</b>	<b>Windows 7</b>
Service Pack:	SP2	--	
Processor:	800 MHz 32-bit/64-bit	1GHz 32-bit/64-bit	
Memory:	512 MB RAM	1 GB RAM/2 GB RAM (Windows 7 64-bit)	
Available disk space:	420 MB	420 MB	
Graphics capability:	SVGA	Direct X 9 support with 128 MB video RAM	
Internet Explorer:	V6.0 or later	V7.0 or later	V 8.0
Network hardware:	10Base or 100Base Ethernet card		
Network software:	TCP/IP networking installed (WinSock2 must be installed on all platforms)		

## Network Scanner Tool Setup

After installation, if you want to configure default profiles, you can start NST Setup Wizard by executing the “Start” => “All Programs” => “Sharpdesk” => “Network Scanner Configuration Tool” program. The Network Scanner Tool setup wizard automatically scans your network to detect Sharp multifunction scanners. The configuration utility provides default destination identification and image-processing commands, which may be modified or expanded. Once specified, these definitions are stored in your scanner’s Desktop Destination Profile web page.

<b>SETTING</b>	<b>DESCRIPTION</b>
Profile Name	A name that appears on the scanner’s front panel that refers to the rest of the settings in the destination profile. You typically select a profile by name before scanning a document.
IP Address or Desktop Host Name	This IP address or desktop host name is used to identify your computer that’s running the Network Scanner Tool.
Desktop Port Number	This number is used to contact the Network Scanner Tool on your computer. The default is 4687. If you change this number in the web page, be sure to also make the change in each computer’s Network Scanner Tool configuration that will receive scans from the scanner.
Process Directory	The Process Directory setting specifies the name of the currently selected Process Definition. Process Definitions that are defined in the Network

---

Scanner Tool. For example, “Convert by OCR” tells the Network Scanner Tool to execute the “Convert by OCR” process when a scanned image arrives. Refer to the Process Definition Tab discussion below for more information.

---



---

# ***Chapter 2***

## ***Preparing the Network***

### **Introduction**

Your Network Administrator must prepare the network prior to installation of the Network Scanner Tool to ensure its proper operation. If your Network Administrator follows the steps in this chapter, users can set up the Network Scanner Tool on their computers using its automatic setup features.

---

## Step 1: Determine the Network Policy

First, determine whether DHCP is used within your organization. If DHCP is used, some or all IP addresses are assigned dynamically. When using DHCP, “hostname” is the identifier used to specify PCs or Scanners. Sharp multifunction scanners require DNS to resolve the address from “hostname” to “IP address”.

Refer to the table below to determine the network policy of your organization.

POLICY	DHCP	ADDRESSING FOR SCANNER(S)	ADDRESSING FOR CLIENT PC(S)
1) Simple addressing	Yes or No	Static	Static
2) Regular DHCP	Yes	Static	Dynamic
3) Full DHCP	Yes	Dynamic	Dynamic
4) Exception DHCP	Yes	Dynamic	Static

**Note:** It is not recommended that “Full DHCP” and “Exception DHCP” policies be used. They require special knowledge in network configuration, including careful setup of the “NIC” in the scanner. If you so use these policies, please refer to the NIC manual to setup dynamic scanner addressing.

## Step 2: Set up the DHCP and DNS Servers

If you are using the Regular, Full, or Exception DHCP policy, DHCP and DNS servers should be set up prior to installing the Network Scanner Tool. These servers maintain the table of dynamic addresses for PCs [2) and 3) above] and Scanners [3) and 4) above].

If you are using the Simple Addressing policy, DHCP and DNS servers are not required, and you may skip this step.

## Step 3: Set up Scanner Network Parameters

If you are using DHCP and the PC addresses are dynamic [2) or 3) above], the addresses of the DNS servers must be set up using the scanner’s Web pages.

If the PC addresses are static [1) or 4) above], it’s recommended that you leave the addresses of the DNS servers blank in the scanner’s Web pages. Specifying information for DNS servers in the scanner’s Web Page that is incorrect may cause problems. It is better to leave these addresses blank and let the Network Scanner Tool determine the proper addresses automatically during its inspection of the scanners.

---

## Step 4: Notify the Network Users

Users connected to the network need to know the policy in effect and the supporting information outlined in the following table.

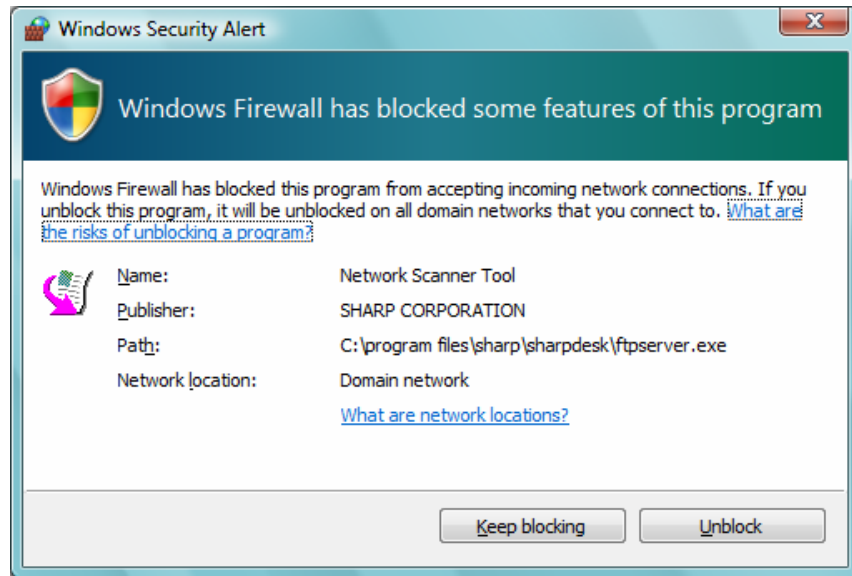
POLICY	ADDITIONAL INFORMATION
1) Simple addressing	The IP address of the scanner(s).
2) Regular DHCP	The IP address of the scanner(s).
3) Full DHCP	The Hostname of the scanner(s).
4) Exception DHCP	The Hostname of the scanner(s).

## Troubleshooting

- Network Administrators should understand the architecture and use caution when changing network parameters associated with network scanning. If problems occur after changing your network policy or server settings, it is recommended that all scanners and PCs running the Network Scanner Tool be reconfigured from scratch.
- While the Network Scanner Tool tries to automatically determine the proper network parameters, sometimes you will need to assist it with information about the advanced architecture. In particular, if the Auto Detect feature cannot find the scanner you want to use, you will have to manually enter the address. This can occur if the network equipment filters UDP Broadcast packets between your computer and the scanner. To manually set the scanner IP address, refer to the Adding a New Scanner section in Chapter 4.

**Note:** Auto Detect does not search beyond the local subnet of the network. Scanner addresses outside the local subnet must be manually entered.

- If UDP packets (not broadcast) are filtered between the PC and the scanner, the configuration step for the Network Scanner Tool will fail. TCP/IP and UDP/IP are required to use the Scan to Desktop function.
- The copiers need to communicate with the PC for Network Scanning to be effective. If you encounter this message, select the Yes button.



## Technical Information

During the automated setup process, the Network Scanner Tool determines the addressing methods used by scanners and PCs using the following logic.

1. If the address of the scanner is in the DNS table, “Host Name” is used for the “Scanner Setting”.
2. If the address of DNS server on the scanner web page is not blank, and the current PC is listed in the DNS table, “Host Name” is used for the “PC Setting”.

---

# ***Chapter 3***

## ***Installing the Network Scanner Tool***

### **Introduction**

The Network Scanner Tool software can be installed using two methods during the Sharpdesk installation process – a “typical” setup which installs the most common options, or a “custom” setup where you select the options you want to install. When installing Sharpdesk, if you select a “typical” installation, Sharpdesk automatically installs and sets up the Network Scanner Tool software.

The Network Scanner Tool also locates and configures all Sharp scanners on the network and then adds a Sharpdesk host that lets you store scanned images that are received by your computer from a networked scanner. In addition, the Sharpdesk installation creates a Network Scanner Tool entry in the Start/Program menu on your computer’s desktop. The first time the Network Scanner Tool is run after installation, Sharp’s Network Scanner Tool Setup Wizard guides you through the Network Scanner Tool setup and configuration process.

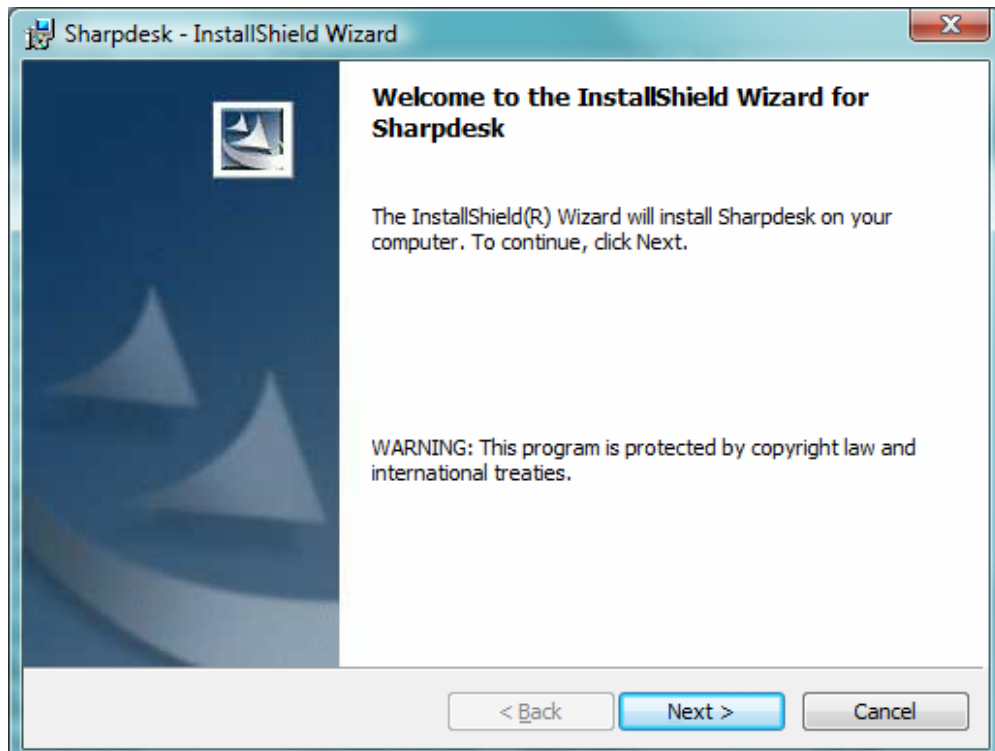
The Network Scanner Tool must be installed on each computer that will be used to receive scanned images from a Sharp network-scanning enabled scanner.

---

## Network Scanner Tool Installation

To install the Network Scanner Tool:

1. Make sure you have a supported scanner connected to the network.
2. If any Windows applications are open, close them to ensure that the software installs properly.
3. Insert the installation CD into your CD-ROM drive. In a few moments, the Sharpdesk Welcome screen appears. If the Sharpdesk Welcome screen does not appear (for example, because you have disabled the Windows AutoRun feature), run the Setup.exe program located in the \Sharpdesk directory on the CD.

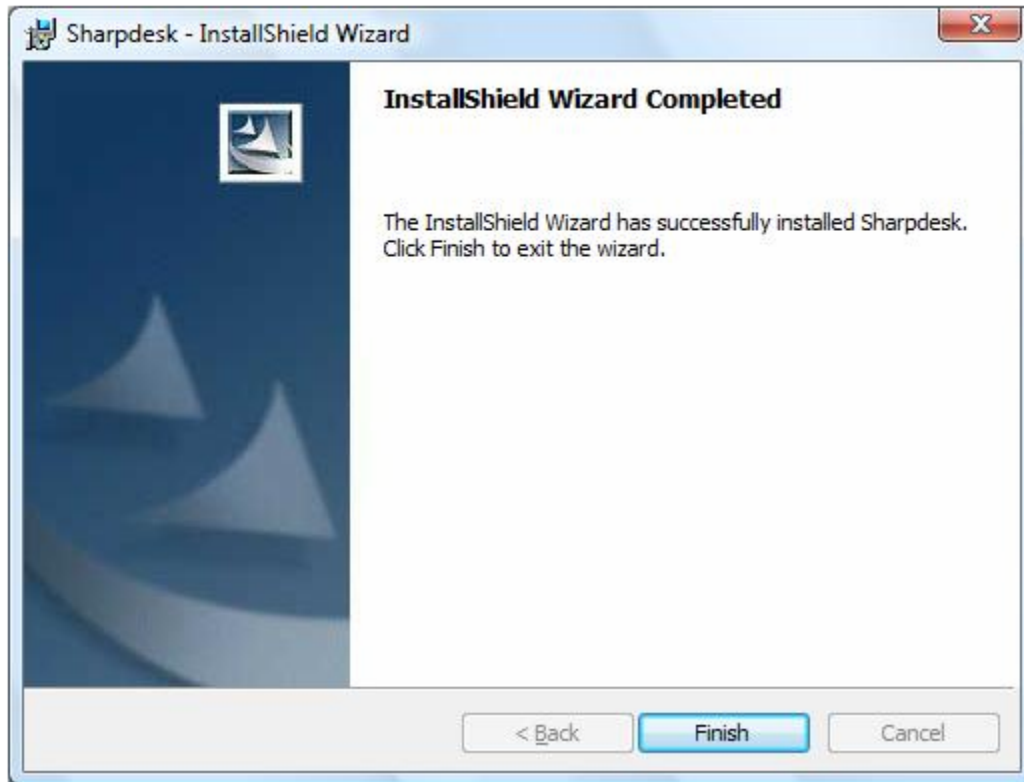


*Sharpdesk Welcome Screen*

4. Click **Next**, and then follow the on-screen instructions to complete the installation.

---

At the end of installation, the program will display the following dialog:



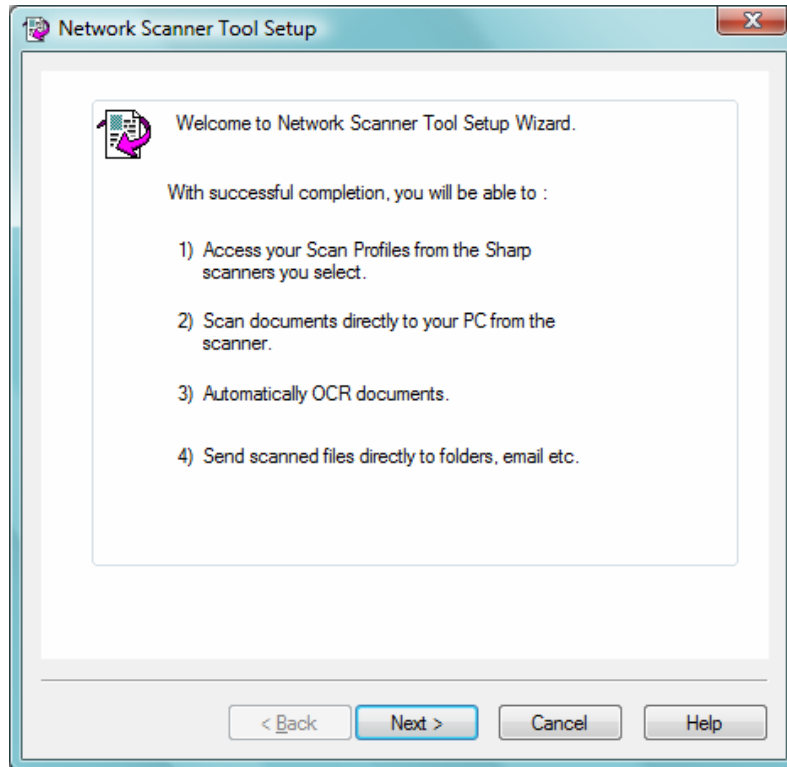
Installation will complete when you click the Finish button. At this point, if you want to run the NST Setup Wizard program, you can start this Wizard by executing the “Start” => “All Programs” => “Sharpdesk” => “Network Scanner Configuration Tool” program. The Wizard interacts with your Sharp multifunction Copier/Printer(s). Make sure the configuration of your network environment and the Copier/Printer(s) is complete and the devices are turned on before starting this Wizard.

**However**, if you skip this Wizard, Network Scanner Tool will **not** be ready to use. After the Wizard has been run once, it will not run again. If the Wizard has already been run, use Network Scanner Tool to change configurations.

---

## Network Scanner Tool Setup Wizard

Once the NST Setup Wizard is started, the Welcome to Network Scanner Tool Setup Wizard screen displays. The wizard will only run once, so be sure to follow the on-screen directions carefully.

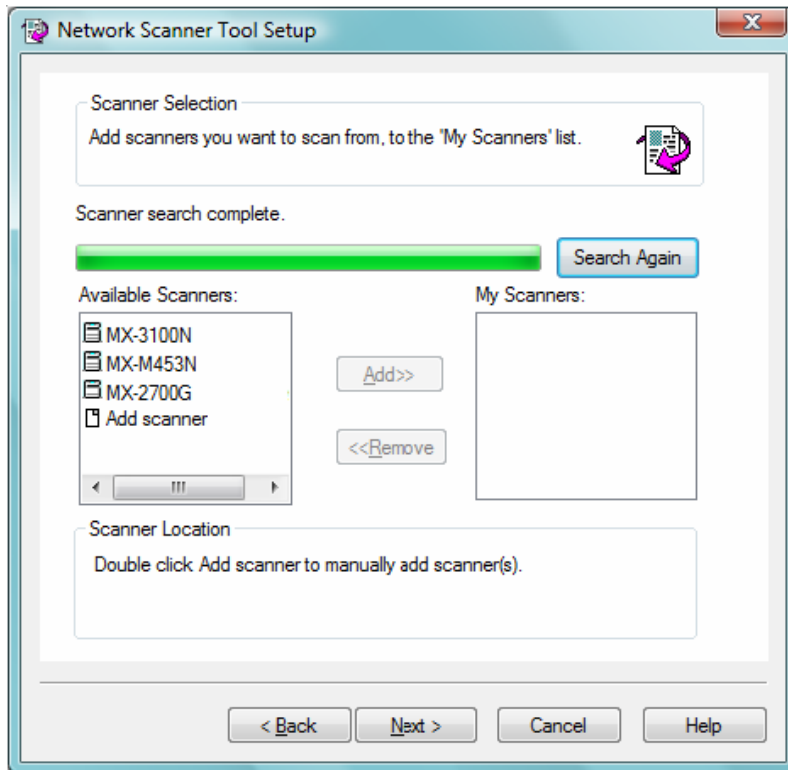


*Welcome to Network Scanner Tool Setup Wizard*

1. Click **Next**.

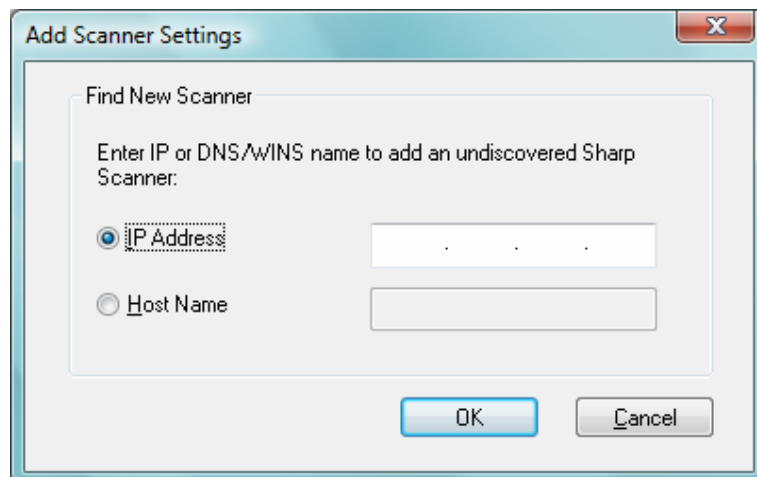
The wizard will search your network and display each of the scanners available for selection. If you would like to run the search again, click **Search Again**.





*Scanner Selection Screen*

2. Select the scanner(s) you want to use from the Available Scanners list and click **Add**. The scanner is moved to the My Scanners list. To remove a scanner from your list, highlight it and click **Remove**.
3. If the scanner you want to use is not listed in the Available Scanners list, you can manually add a scanner by double-clicking **Add Scanner**.

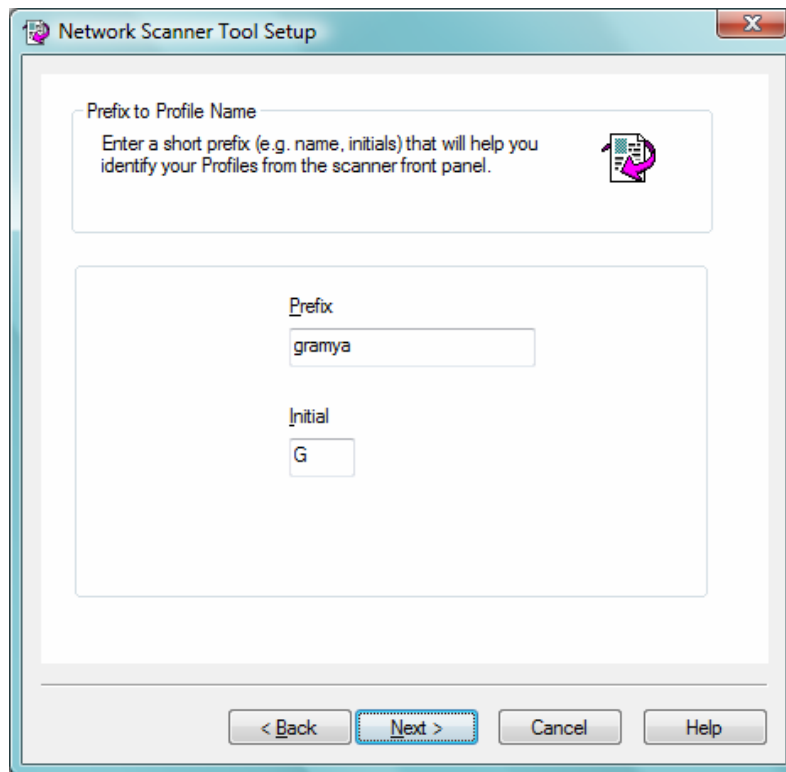


*Find New Scanner dialog*

4. Enter the scanner's IP Address or Host Name (DNS/WINS) and click **OK**.
5. After selecting your scanner and setting the applicable options, click **Next**.

---

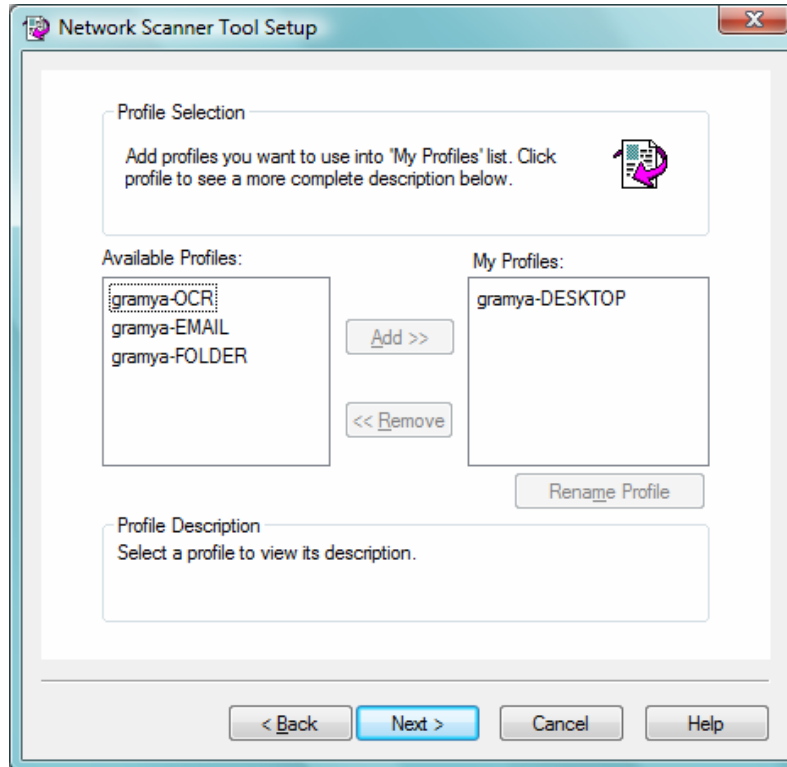
The Prefix to Profile Name screen displays.



*Prefix to Profile Name screen*

6. Enter a name using up to 20 English characters (this name will be used to identify your profiles in the scanner) and click **Next**.

The Profile Selection screen displays.



*Profile Selection screen*

7. Select the profiles you want to apply when working with the Network Scanner Tool by highlighting the profile in the Available Profiles list and clicking **Add**. To remove a profile from your profile list, highlight it and click **Remove**.

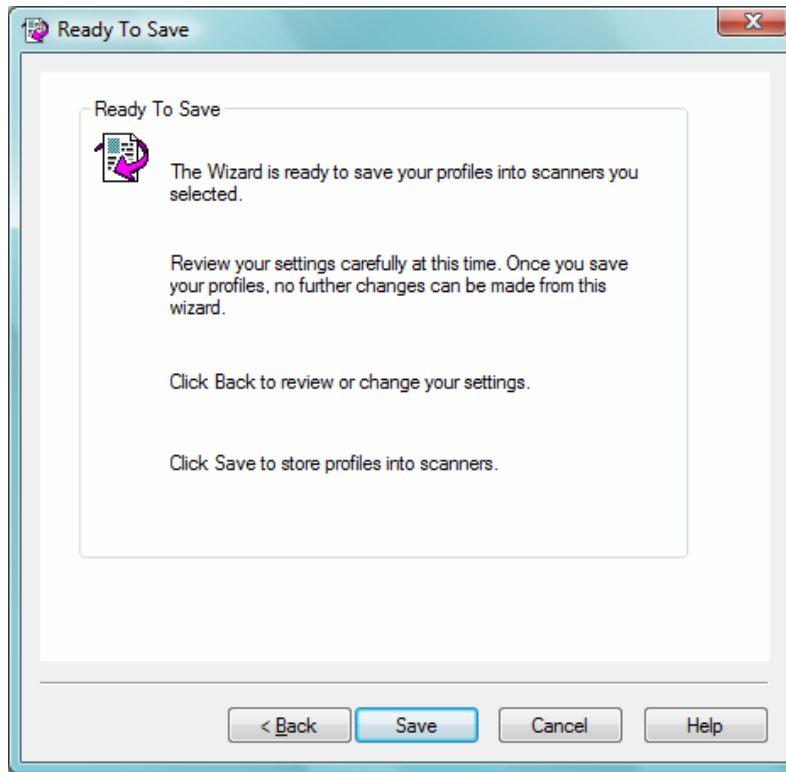
Available profiles include:

- **OCR**: automatically converts a scanned document to editable text (using OCR) and stores it in your Sharpdesk desktop folder.
- **EMAIL**: opens your email application and attaches the scanned document as an email attachment.
- **FOLDER**: scans documents to a folder of your choice. When added to your profile list, a Browse for Folder dialog displays. Select the folder where you want to store your scanned documents and click **OK**.

To rename a profile, highlight it, click **Rename Profile**, and type the name you want to use.

8. After making your selections, click **Next**.

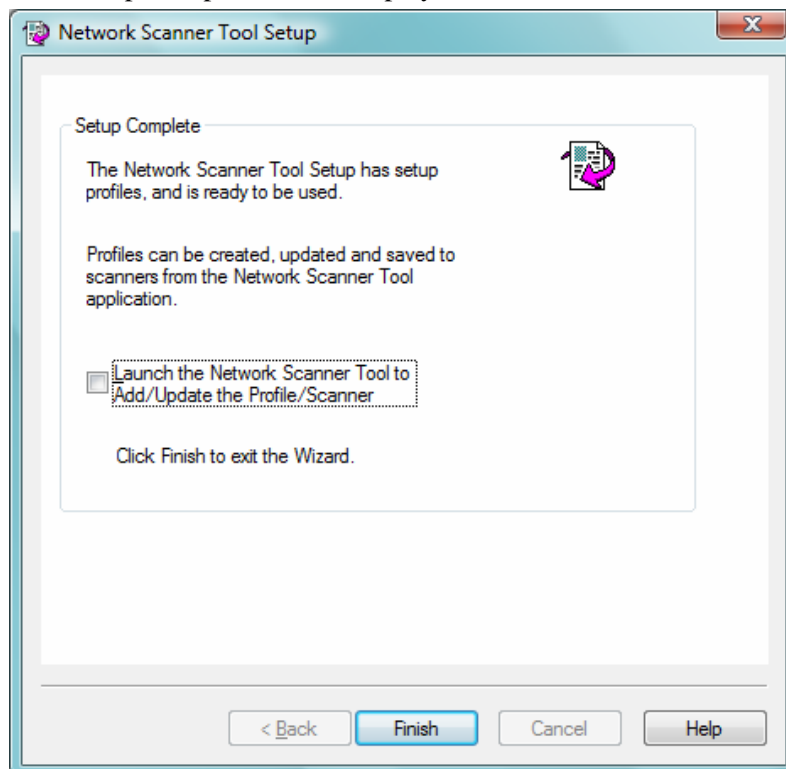
The Ready to Save page displays.



9. Click **Save**.

10. Once your profiles have been saved, click **Next**.

The Setup Complete screen displays.



- 
11. If you check the “Launch the Network Scanner Tool...” box, when the Wizard completes, Network Scanner Tool will be launched, allowing you to add scanners not found automatically or to add or update profiles.
  12. Click **Finish**.

The Network Scanning Tool setup is complete and is ready to use.

---

# ***Chapter 4*** ***Using the Network Scanner Tool***

## **Introduction**

The Network Scanner Tool user interface lets you setup and configure network-scanning processes using three configuration tabs:

1. Profiles
2. Scanners
3. System Options

Each tab lets you select processing steps to follow each time your computer receives a scanned image from a networked scanner. You can access these tabs from either the Sharpdesk **Product Configuration/Tools** menu or the Network Scanner Tool icon in the Windows system tray.

---

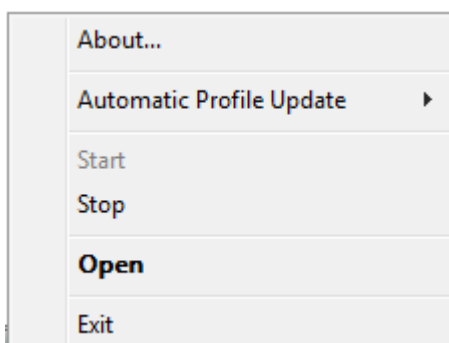
## Network Scanner Tool Menu (system tray icon)

Right-clicking on the icon located in the Windows system tray lets you access the Network Scanner Tool menu. If you need the current status of the Network Scanner Tool, simply mouse-over the icon to display information such as “Network Scanner Tool is Started”, “Network Scanner Tool is stopped”, and so on. You can also receive Network Scanner Tool status as indicated by the different icons displayed in the system tray:



*Network Scanner service is Started Network Scanner service is stopped*

The Network Scanning Tool icon is placed on the Windows system tray during installation and will automatically start up each time your computer restarts. Right-clicking on the Network Scanner Tool icon displays the following menu for controlling the Network Scanner Tool:



*Network Scanner Tool Menu*

When an image file is received in the server folder, the Network Scanner Tool takes action to process it based on the configuration profile settings.

### **Open**

Opens and displays the Network Scanner Tool.

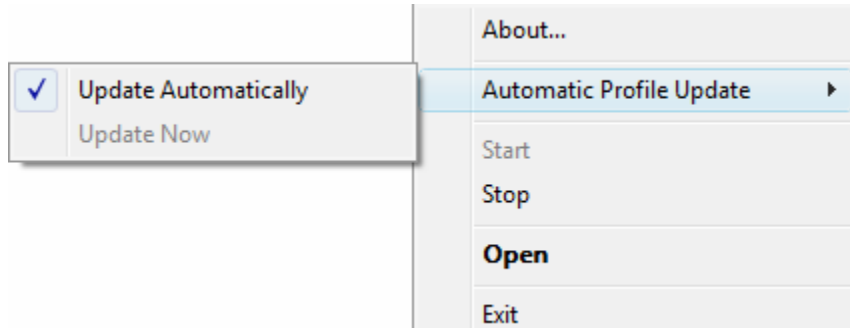
### **Start/Stop/Exit**

You can start the Network Scanner Tool service, stop it, or close it down using these commands.

---

## Automatic Profile Update

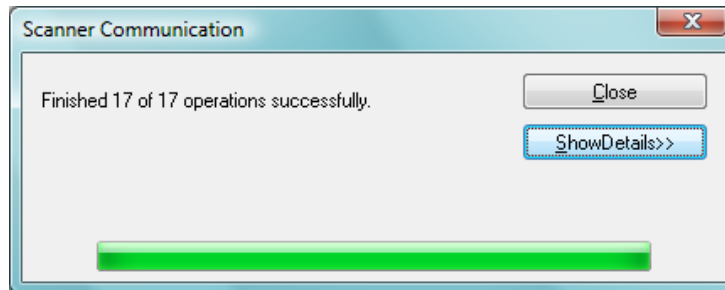
You can control when profiles are updated in your copiers if your host IP address is changed using system commands. If this is done, the addresses stored in the profiles in your copiers will not match your new address and you will not be able to scan to your desktop from the copiers.



There are two choices:

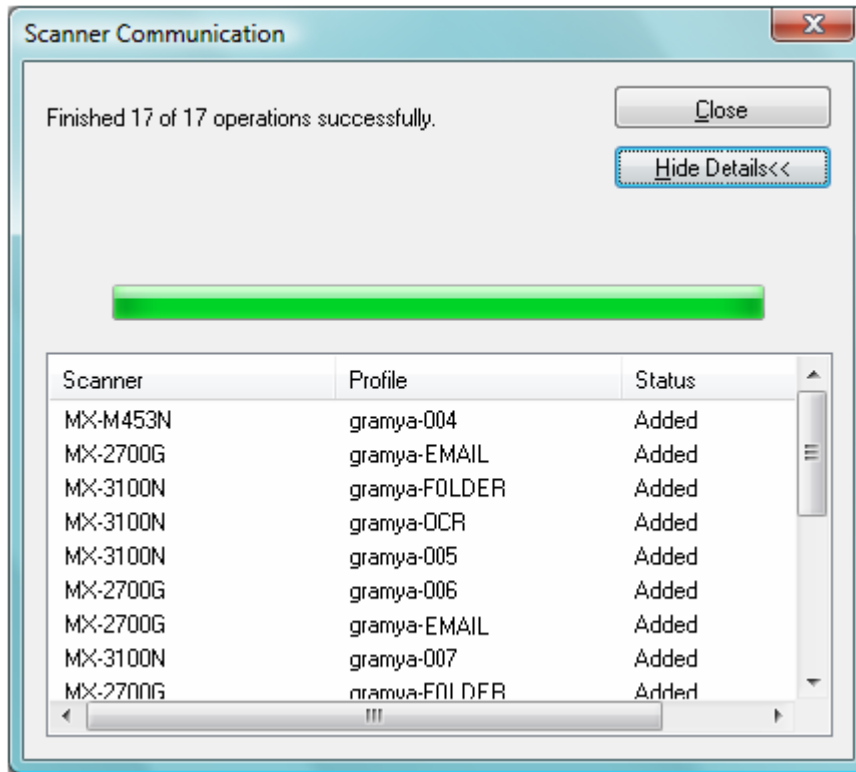
- Update Automatically (default): When this option is selected, the profiles in the copiers will all be updated the next time you reboot your PC.
- Update Now: If you select this option, the profiles will be updated with the new information immediately. In addition to updating the current profiles with the new host IP address, any profile previously blocked from being sent to the copiers (for instance, the copier was powered down when originally sent) will now be delivered.

The Scanning Progress dialog will be displayed while the profiles are being updated:



You may not cancel an update process until it completes. When the update is complete, the Cancel button will change to a Close button. If you want to see what happened during the update, press the Show Details button:





## About

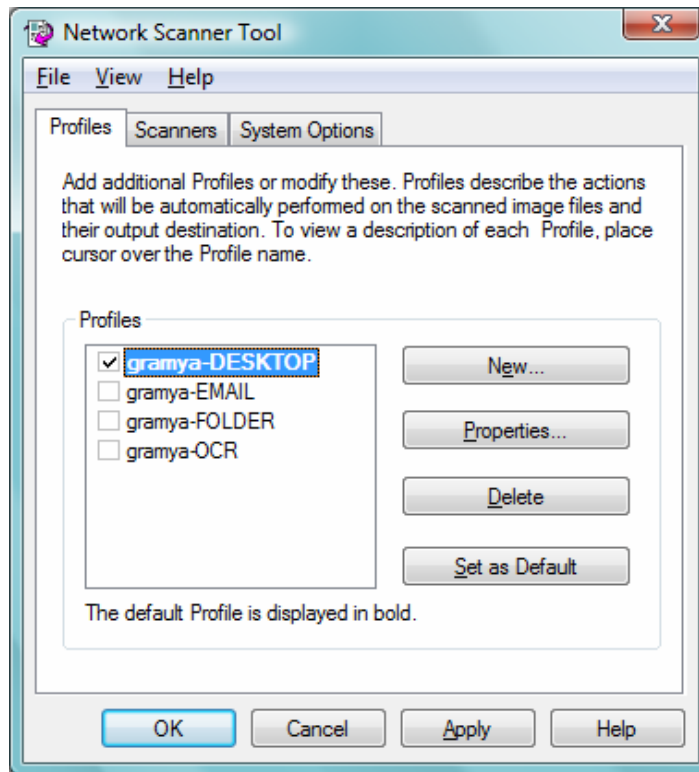
Selecting this option displays the Network Scanner Tool About screen.

---

## Configuring the Network Scanner Tool

The Network Scanner Tool application can be started in a number of different ways: from the Network Scanner Tool context menu (or by simply double-clicking the icon in the Windows system tray), or from the Start->All Programs->Sharpdesk->Network Scanner Tool menu, or from the Sharpdesk application, using the Tools -> Product Configuration -> Network Scanner Tool menu.

The following sections describe how to configure the Network Scanner Tool using the three configuration tabs.



*Profiles Tab*

Note: If there are profiles already existing in the PC, configured by other Users, then Profiles tab will also list them.

### Profiles Tab

A profile lists the steps that will automatically take place on a file once it arrives at the desktop.

The Profile tab lets you:

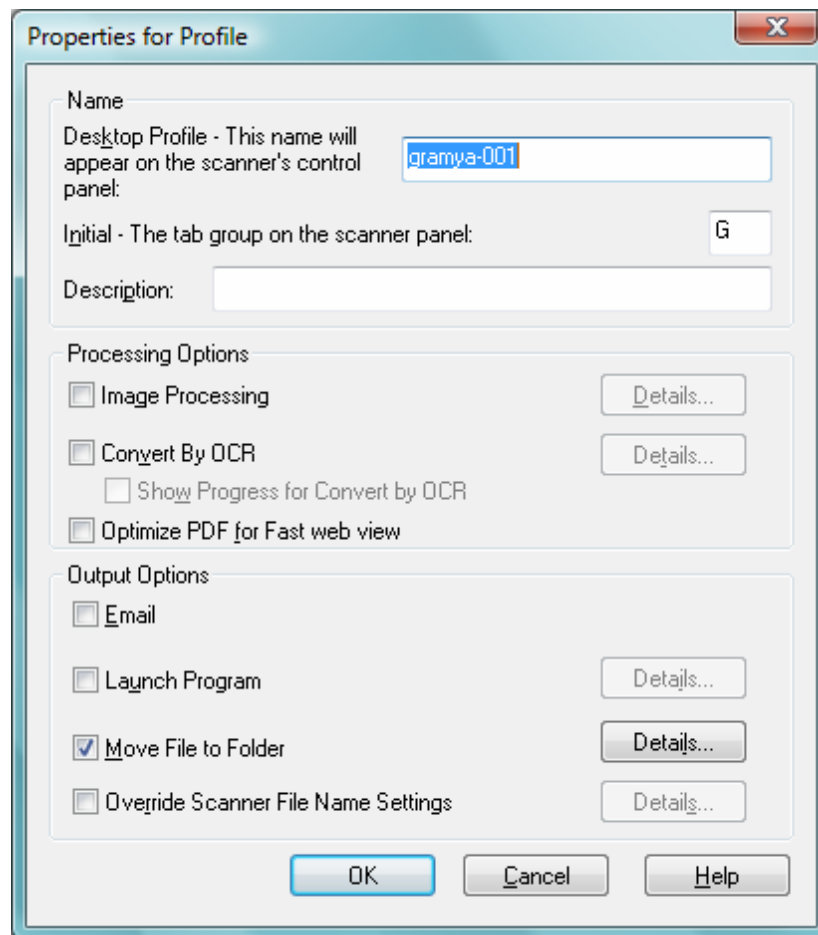
- Create a new profile
- Examine profile options
- Delete an existing profile
- Select a default profile

Keep the following in mind when working with profiles:

- The Email profile does not save email addresses. As a result, each time the email client starts on your computer in response to receiving an e-mail request from the scanner; it prompts you for the destination address.
- The Convert by OCR profile default is MS Word97 (\*.doc). The resulting files are then placed in the Sharpdesk desktop folder.
- As the default, each profile uses the first 20 English characters of your login name followed by a “-” and the first five letters of the profile name for the value shown on the scanner’s Desktop Profile name. For example:  
 gramya-DESKTOP  
 gramya-OCR  
 gramya-EMAIL  
 gramya-FOLDER
- Only the profiles selected (a check displays in it’s checkbox) are available for use.

### Creating a New Profile

To create a new profile, click the **New** button on the Profiles tab. This displays the Properties for Profile screen that lets you define the action or process to take when an image is received at your computer.



*Properties for Profile Screen*

---

Each Profile executes one or more of the following actions by setting up the appropriate attributes:

- If both the Image Processing and Convert by OCR options are selected, Image Processing executes first and Convert by OCR executes second.
- If Convert by OCR is selected, the Output Options for the Profile refer to the text document that is produced by the OCR process, not the original image.
- Checking the box next to an option will add it to all scanners that have been selected on the Scanners tab when the Apply button is clicked. Similarly, unchecking an option will remove it from all scanners selected on the Scanners tab when Apply is clicked.

### Profile Properties Options -- Name

These options let you specify a name for a particular process. The name, local to your computer, is used as a reference and uniquely identifies the processing steps you setup. It is also used as a sub-directory and appears on the scanner web page as the directory used in the desktop destination.

### Desktop Profile

This 36 English character name appears on the scanner front panel. It is used to uniquely identify your computer and process name when the scanner sends it an image. Profile Name cannot contain any of the following characters:

<	>	&	“
‘	?	;	,
*		#	!

### Initial

If the scanner has the capability to classify the desktop profiles on the scanner front panel (in a tab-like fashion), it will use this character. By default, the character specified in the Setup wizard (if left blank, you will be prompted to enter an initial letter) is used.

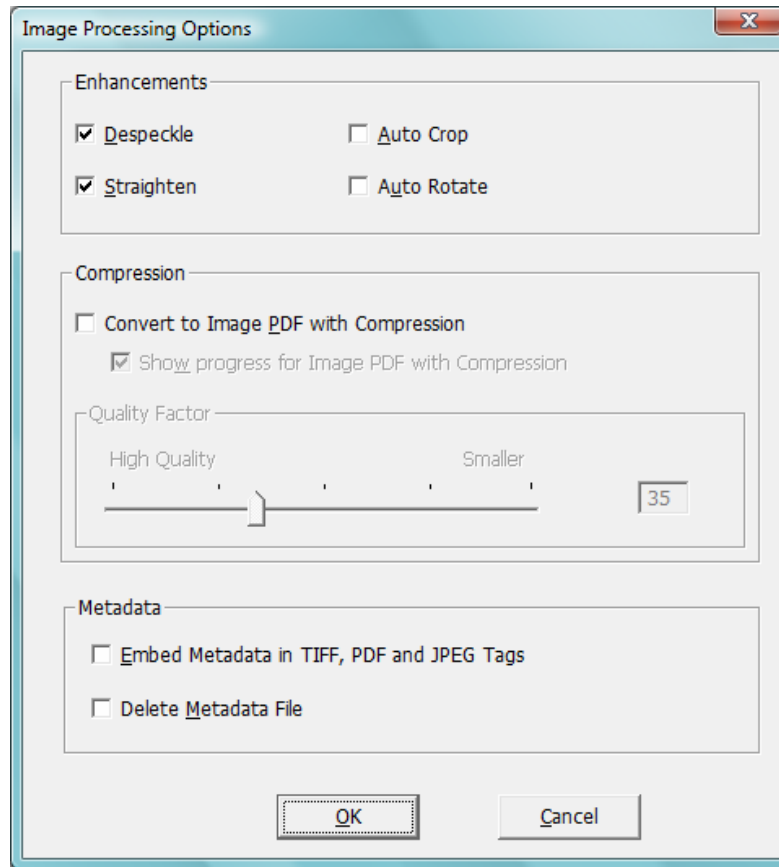
### Description

This field allows you to enter a profile description (what it does). This will be displayed as a “Tool Tip” when the mouse cursor is moved over the profile in the Scan Profile List.

---

## Profile Properties Options – Image Processing

Checking the Image Processing checkbox and then clicking the Details button displays the Image Processing Options screen.



*Image Processing Options Screen*

### Enhancements

The **Enhancements** portion of the screen lets you select the following image enhancements:

- **Despeckle** — Remove small dots from images.
- **Straighten** — Automatically straighten pages.
- **Auto-Crop** — Borders are detected and images are cropped.
- **Auto-Rotate** — Detects the orientation of text on the scanned page and automatically rotates the page correctly.

### Compression

The **Compression** portion of the screen lets you control compression of color images that are scanned to folders using Network Scanner Tool.

- 
- To compress color scans using JPEG 2000 compression and generate a PDF file with the image, check the “Convert to Image PDF with Compression” box. This will enable the Quality Factor slider, allowing you to select the amount of compression that you want.

**Note:** Compressing an image will lose a certain amount of detail information from the original image. In most cases, your eye will not be able to tell the difference. You should adjust the slider to suit your preferences regarding the size of the image and the space it will occupy on your hard drive.

- Move the slider to the left to keep more detail in the image (but use more disk space).
- Move the slider to the right to lose some detail in the image (but use less disk space).

You may also enter a number between 1 and 100 in the box to the right of the slider. 1 is a special case that causes the image to be compressed using the JPEG 2000 lossless method. In general, this selection gives the highest quality possible, but it will most likely generate a larger file than the MFP would produce without using the Compression option. Any setting from 2 to 100 will use JPEG 2000 to compress the color images. The higher the number, the more compression and smaller file size, at the expense of some detail or distortion in the image. For more information, please review the Sharpdesk User’s Guide section on Compressing Images.

## Metadata

The *Metadata* portion of the screen allows you to control the final disposition of metadata generated by some Sharp MFPs. Consult your MFP manual to see if it support the generation of metadata. Metadata is passed as a separate file along with the scanned image to the target folder.

- To insert the metadata information directly into the TIFF, PDF or JPEG file that you scanning, check the “Embed metadata in TIFF, PDF or JPEG tags” box. Network Scanner Tool will read the metadata file for this image and insert the contents into the Keywords “tag” field of the TIFF, PDF or JPEG scanned image. This metadata information can be found later using the Sharpdesk Search feature. If more than one TIFF, PDF or JPEG file is generated by a single scan operation, the metadata associated with the scan will be embedded in every file. This would happen if you select a “Specified Pages per File” option on the MFP for a multi-page scan.
- Once the metadata has been inserted into the TIFF, PDF or JPEG image file, you may choose to delete the original metadata file that accompanied the original image by checking the “Delete metadata file” box. If you think you may need the original metadata file later, do NOT check this box.

After selecting your options on the Image Processing Options screen, click **OK**.

## Profile Properties Options – Convert by OCR

This option lets you change image files to text files using OCR (Optical Character Recognition), and automatically launches the program associated with the file type (for example, MS Word for RTF files). These are the same options as Sharpdesk’s Convert By OCR and are accessible by clicking the **Details** button.

**Note:** the Details button is only enabled if the Convert by OCR box is selected.

Refer to your Sharpdesk User’s Guide for more information on using this option.

---

## Profile Properties Options – Optimized PDF for Fast Web View

This option lets you to save the PDF file as Linearized PDF for fast web view. This means that when the scanned file is accessed over the web, instead of waiting for the entire document to stream down to the browser, it allows for the first page or any desired page to load immediately.

## Profile Properties Options – Output Options

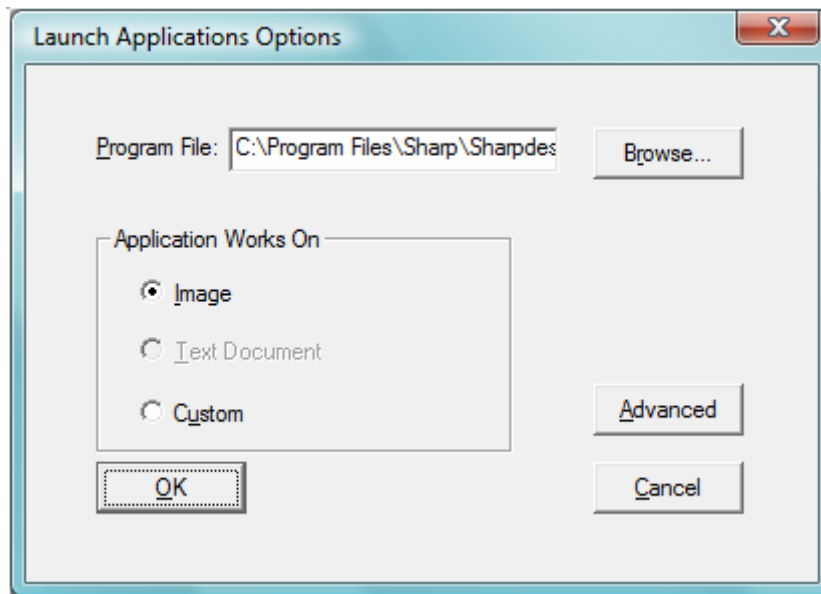
Four Output Options are available: Email, Launch Program, Move File to Folder, and Override Scanner File Name Settings (you must select at least one).

- **Email**

If you select Email, the process will launch your MAPI-compliant mail client on your computer, attaching the image as an attachment. You can then add your cover message and enter the destination email address.

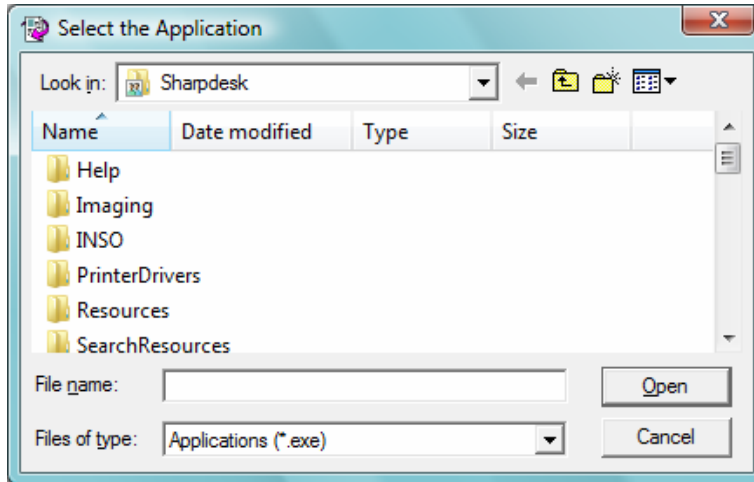
- **Launch Program**

If you select Launch Program, you can select an application capable of opening the file. For example, an application that can open TIFF files (if Image is selected and TIFF format is selected in the scanning information area) or an application that can open Text files (if Text is selected and the OCR output type property is set to RTF). To select the program to start, click the **Details** button next to the option and the following screen will display:



*Launch Applications Options Screen*

If Sharpdesk is installed on your computer, it will automatically be selected as the default Program File. You can select another program by clicking **Browse**. A standard Windows Open dialog displays. Navigate to the desired application and either double-click it or select it, and then click **Open**.



*Open Screen*

Select the file type, which will be opened with the selected application — Image, Text Document, or Custom.

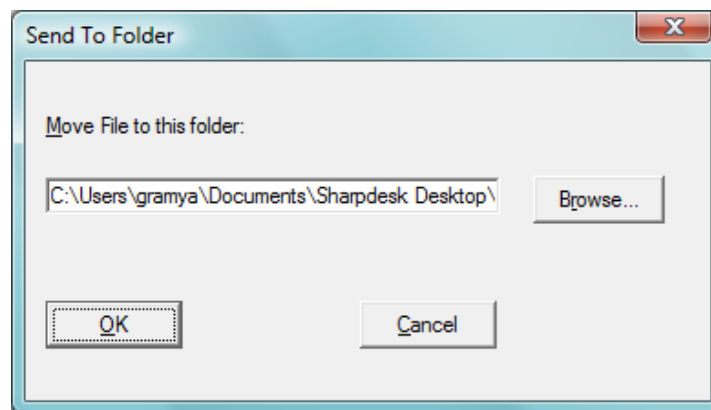
**Note:** Some options will be unavailable for selection based on your profile property selections (for example, if you have not selected Convert by OCR, the Text Document option on this window will not be available).

If you selected the Custom option, click **Advanced**, enter the command-line parameters required to launch the application, and then click **OK**.

After making your selections on the Launch Applications Options screen, click **OK**.

- **Move File To Folder**

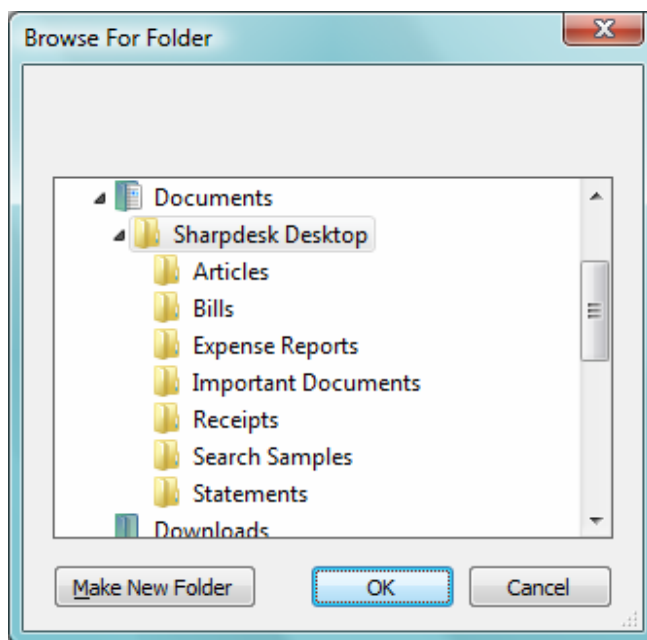
This option lets you select the folder that your scan will be moved to. When you click **Details**, the Send to Folder screen displays.



*Send to Folder Screen*



- 
- Click **Browse** to display the Browse for Folder screen where you can select the target folder.



*Browse For Folder Screen*

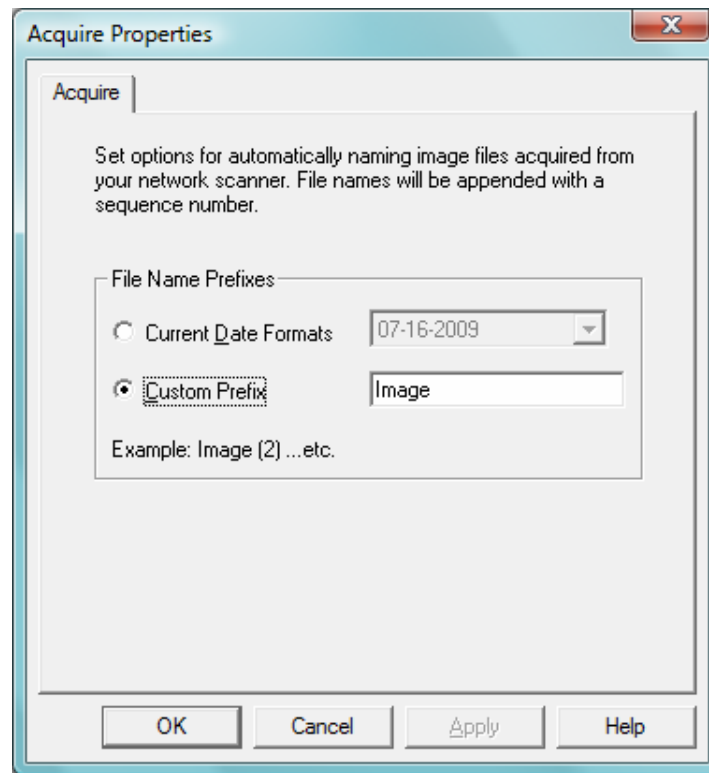
- After selecting your folder, click **OK**.

**Important Note:** Sharp multifunction scanners with Network Scanner Expansion need to be configured to supply a unique identifier when sending scanned images to the Network Scanner Tool. These options are set by the scanner's E-mail/Network Scanning Setup web page. Under the Network Scanning Setup pane, use the File Name options to be sure that each scan arrives with a unique name. If this is not done, all scans will arrive with the same name, each new one over-writing the one that arrived before. The web page can be accessed using the Web Setup button on the Scanners tab described below.

---

- **Override Scanner File Name Settings**

This option lets you rename files received from a scanner. Click **Details** to display the Acquire Properties screen.



*Acquire Properties Screen*

You can select to use the Current Data Format, which can be selected from the drop-down list, or a fixed prefix you define followed by a sequence number, for example, Image (2). After making your selection, click **OK**.

If you choose to override scanner names, note that the sequence number added to the end of the file name is not always predictable. Network Scanner Tool looks into the target folder to see if the name it is generating is already in use. If it is, the sequence number will be increased until there is no collision with an existing file in the target folder. This insures that a new scan never over-writes an existing file in the target folder. If files arrive in pairs (for example, if you choose to keep XML files containing metadata for a given scan), the file names will not necessarily be paired if name collisions would occur. If you choose to always keep metadata files, or to always delete metadata files after inserting the information into the paired image file, this mis-match of file names between an image and its metadata file is not likely to occur.

To close the Properties for Profile screen and apply the settings, click **OK**. The Network Scanner Tool window re-displays.

### **Reviewing Profile Settings**

You can review the options assigned to a profile by clicking on a profile name in the Profiles list and then clicking the **Properties** button, or by double-clicking on the profile name.

---

## Deleting a Profile

To delete a profile, select it from the Profiles list and then click the **Delete** button. When the confirmation message displays, click **yes**. This deletes the associated Destination from scanners that have been selected on the Scanners tab.

## Profile Default

You can set one profile as the default by selecting it from the Profiles list and then clicking the **Set as Default** button. This default profile executes whenever a scan is sent to your workstation and the destination directory of the scanner configuration web page is uri:scan/nst. The default profile will be displayed in **bold** text in the Profiles list.

**Note:** This operation does not enable the profile and therefore does not update the scanner(s).

After entering or updating information on the Profiles tab, click **Apply** to apply your updates and keep the Network Scanner Tool screen active. To apply your changes and close the screen, click **OK**. To close the screen without saving any changes which may have been made, click **Cancel**.

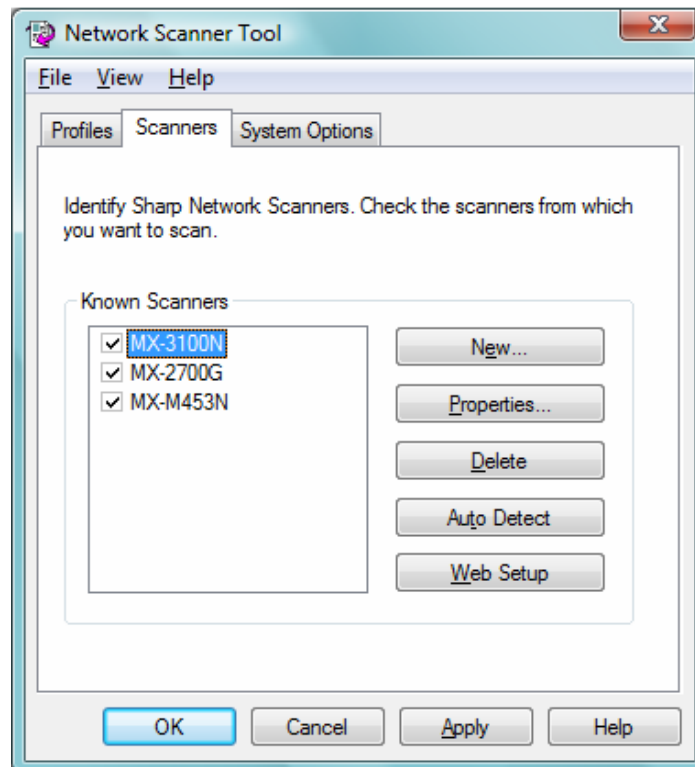
**Note:** Automatic setting of default profile will be limited to only the User, who runs NST Setup Wizard first on the PC and configures profiles.

---

## Scanners Tab

The Scanners tab lets you:

- Add a new scanner with Scanner Expansion.
- Examine and/or change scanner properties.
- Delete an existing scanner.
- Automatically detect Sharp scanners connected to the network.
- Use Web Setup pages of a Sharp multifunction scanner to change configuration values.
- Enable/disable a scanner (by checking its checkbox).

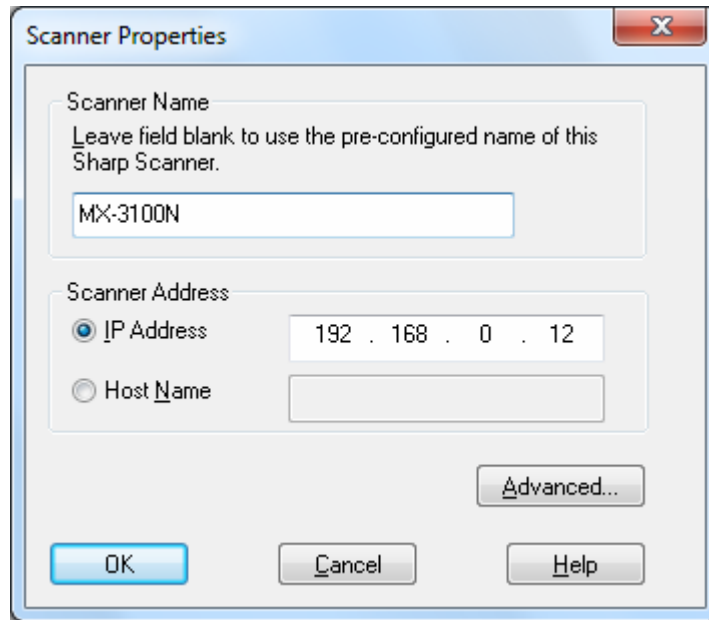


*Scanners Tab*

---

## Adding a New Scanner

To add a new scanner, click the **New** button on the Scanners tab. The Scanner Properties screen displays allowing you to add a scanner. If you select a scanner that was automatically detected by the Network Scanner Tool, then an IP address displays in the Scanner Properties screen. If you want to add a scanner that was not automatically detected, you will have to manually enter the correct IP address or Host Name (DNS or WINS).



*Scanner Properties Screen*

The following options are available on this screen.

### IP Address

When the IP address is used, the Network Scanner Tool verifies that the IP address is assigned to a Sharp scanner.

If your network operates under the Simple Addressing or Regular DHCP policies described in Chapter 2, it is recommended to select 'IP Address' to identify the scanner. IP addresses are available from the Print Configuration Page or your Network Administrator.

### Host Name

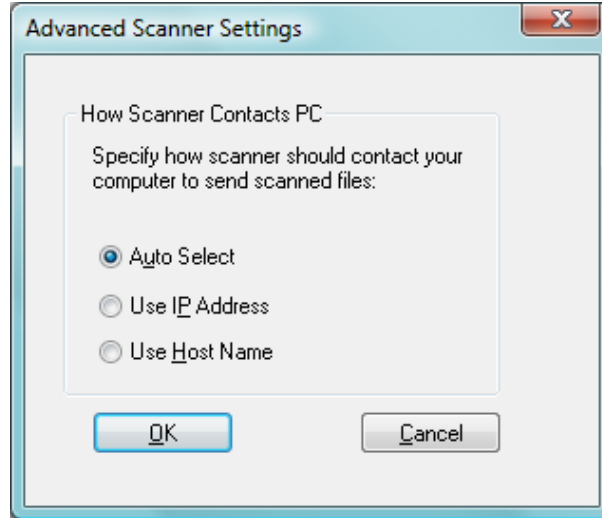
If your network operates under the Full or Exception DHCP policy described in Chapter 2, it is recommended to use 'Host Name' to identify the scanner. Host Names for scanners are available from your Network Administrator.

Once you enter the Host Name, the Network Scanner Tool will automatically fill in the correct IP address.

---

## Advanced

The Advanced button allows you to specify how your PC network address is to be resolved:



*Advanced Scanner Settings Screen*

- If your network operates under Simple Addressing or Exception DHCP policies described in Chapter 2, it is recommended to select ‘Use IP Address’ to identify your computer.
- If your network operates under Regular DHCP or Full DHCP policies described in Chapter 2, it is recommended to select ‘Use Host Name’ to identify your computer.
- After making your selection, click **OK**.

The following table summarizes the recommended choices depending on the policy in force on your network.

<b>POLICY</b>	<b>THE SCANNER ADDRESS</b>	<b>THE COMPUTER ADDRESS</b>
1) Simple addressing	Use IP address	Use IP address
2) Regular DHCP	Use IP address	Use Host Name
3) Full DHCP	Use Host Name	Use Host Name
4) Exception DHCP	Use Host Name	Use IP address

**Note:** Periodically, after the setup wizard runs, the addressing methods selected will not match this table. This is generally not a problem, but if you have trouble using the ‘Scan to Desktop’ profiles, set up the addresses manually to correct the problem.

- After entering the IP Address or Host Name on the Properties for Scanner screen, click **OK**. The process settings take effect immediately.

## Examining/Changing Scanner Properties

Select the scanner for which you want to view or update settings from the Known Scanners list and click the **Properties** button. The Properties for Scanner screen displays the settings for the specified scanner and can be updated as described above.

---

## Deleting a Scanner

To delete a scanner, select it from the Known Scanners list and then click the **Delete** button. When the confirmation message displays, click **Yes**.

Any active profiles residing on that scanner will be removed as part of the scanner delete process.

## Enable/Disable a Scanner

You can enable or disable a scanner for scanning to your computer by checking or unchecking the box next to the scanner name.

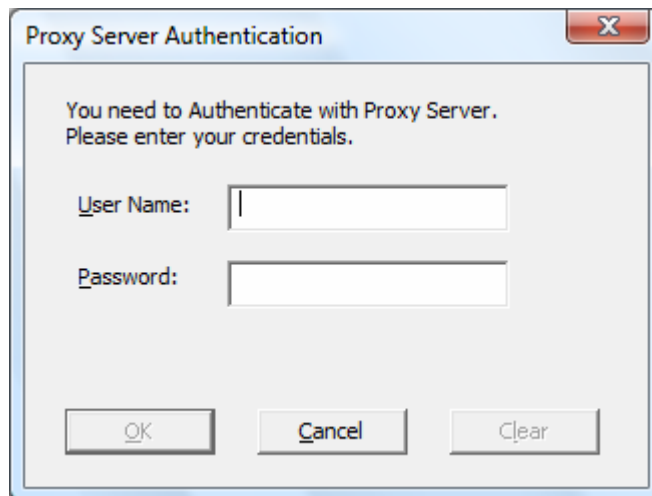
**Note:** If more than one User are using Network Scanner Tool in the same PC, the “Enable/Disable a Scanner” by one User will affect the scanner settings of the other Users also.

## Auto Detect

This option will cause the Network Scanner Tool to search the local subnet for Sharp scanners that are capable of network scanning. The local subnet consists of those IP addresses that have the first three segments in common. Any scanner that is found will be listed but not enabled. Once detected and listed, you need to check the ones you would like to use with the Network Scanner Tool.

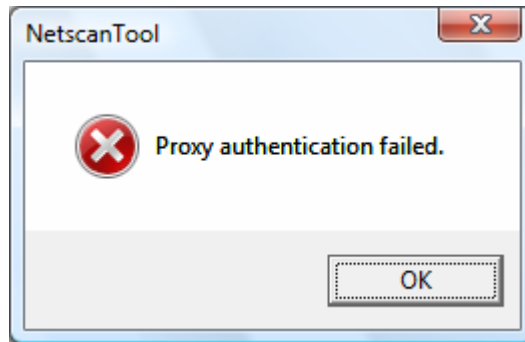
## Proxy Server Support

Proxy server support for device discovery is possible in Sharpdesk 3.3. The User can now enter proxy server credentials for authenticating with a proxy server when communicating with MFP's from NST.



---

If the credentials are entered wrongly thrice, then the following error message is displayed.



In case of error, User has to repeat Auto-detect again and enter correct credentials.

### Web Setup

**Note:** An administrator login might be required to use this feature.

This option lets you use a scanner's web page to change its configuration values. These pages are accessible by selecting a scanner from the Known Scanners list and then clicking the **Web Setup** button. Adding or deleting profiles with the web page will not update the listing of profiles used by the Network Scanner Tool. *Changing options from a scanner's web page is not recommended.*

After entering or updating information on the Scanners tab, click **Apply** to apply your updates and keep the Network Scanner Tool screen active. To apply your changes and close the screen, click **OK**. To close the screen without saving changes which may have been made, click **Cancel**.



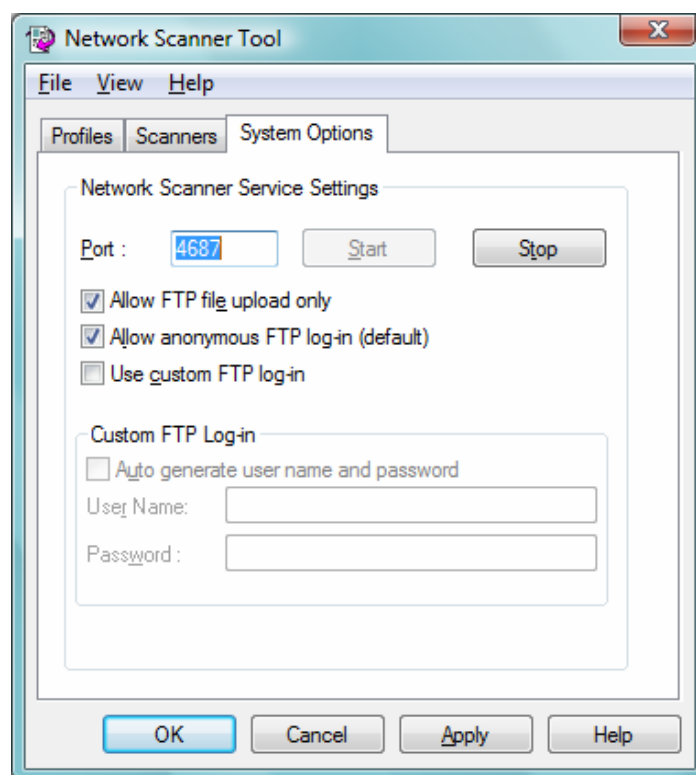
---

## System Options Tab

The Network Scanner Tool uses a modified FTP server that is controlled using the System Options tab. This tab lets you set the FTP port number for communications with your computer as well as FTP reads.

**Note:** The FTP service is automatically started when the Network Scanner Tool is started. You can use the **Stop** button to stop the service, and the **Start** button to restart it.

Security is provided using a unique port (rather than the standard FTP port number) and by allowing only receipt of files. The modified FTP server always uses an anonymous login so there is no risk of a user name or password being intercepted. Since FTP Get commands can be disabled, no other computer can read files that are sent to the modified FTP server.



*System Options Tab*

The Network Scanner Tool limits the type of files that can be transferred to your computer to certain file types including .TIF, .JPG, JPEG and .PDF with or without compression.

### FTP Port Number

The Network Scanner Tool can use a different port number than the standard FTP port number (21). However, if an FTP profile-type is used to scan from a multi-function printer, the FTP port number must be set to 21. You can specify a port number 21 or in the range of 1025..65535.

### Allow FTP file upload only

When selected, the scanner can only be used to upload files to the FTP home directory. If not selected, both uploads and downloads are possible.

---

### **Allow anonymous FTP log-in (default)**

When selected, the FTP service will allow anonymous logins (where the user is “anonymous” and the password is a valid email address). This option is required for older scanners that do not support a more secure FTP login.

### **Use custom FTP log-in**

When selected, the Secure Account options become available allowing you to apply a more secure (non-anonymous) FTP login. You can either select the “Auto Generate User and Password” option which will automatically generate the User ID and Password, or you can specify a User ID and Password using 6-32 characters.

User Name / Password can only be a combination of English letters (a-z or A-Z), digits (0-9), space, and punctuation marks.

After entering or updating information on the System Options tab, click **Apply** to apply your updates and keep the Network Scanner Tool screen active. To apply your changes and close the screen, click **OK**. To close the screen without saving changes which may have been made, click **Cancel**.